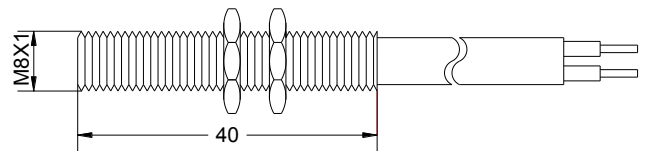


Características:

- Invólucro tubo de latão
- Temperatura de trabalho -5°C +60°C
- Expectativa de vida 10.000.000 operações
- Acionamento feito através de imã
- Fornecido com cabo padrão de 1,50 m
- Grau de proteção: IP67

Sensor



SUJEITO A ALTERAÇÃO SEM PRÉVIO AVISO

Modelo	Tensão/máx.	Corrente	Potência	Contato
TG3R	230Vcc/ca	3A	60W	NA
TG3R-S	150Vcc/ca	0,5A	10W	NA
TG3RS-NF	100Vcc/ca	0,25A	3W	NF

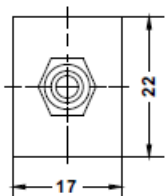
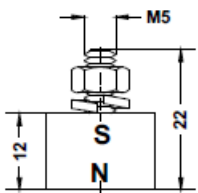
Imãs

TTC1



Imã modelo **TTC1**

Sensor	Sn
TG3R	10
TG3R-S	20
TG3RS-NF	15

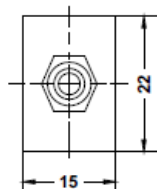
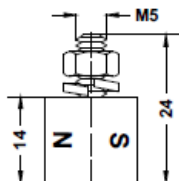


TTSO



Imã modelo **TTSO**

Sensor	Sn
TG3R	10
TG3R-S	20
TG3RS-NF	15

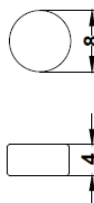


TTR8



Imã modelo **TTR8**

Sensor	Sn
TG3R	5
TG3R-S	12
TG3RS-NF	7

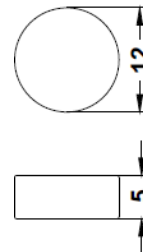


TTR12



Imã modelo **TTR12**

Sensor	Sn
TG3R	13
TG3R-S	20
TG3RS-NF	15

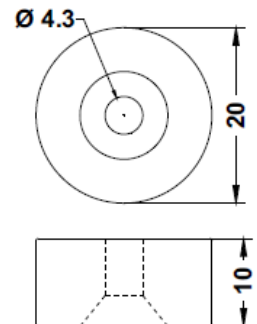


TTR20



Imã modelo **TTR20**

Sensor	Sn
TG3R	8
TG3R-S	16
TG3RS-NF	10



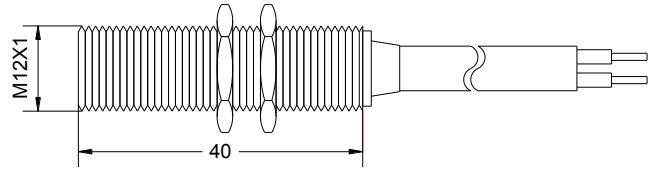
Sn: Distância sensora

Dimensões em mm

Características:

- Invólucro tubo de latão
- Temperatura de trabalho -5°C +60°C
- Expectativa de vida 10.000.000 operações
- Acionamento feito através de imã
- Fornecido com cabo padrão de 1,50 m
- Grau de proteção: IP67

Sensor



Modelo	Tensão/máx.	Corrente	Potência	Contato
TG4R	230Vcc/ca	3A	60W	NA
TG4R-S	150Vcc/ca	0,5A	10W	NA
TG4RS-NF	100Vcc/ca	0,25A	3W	NF

SUJEITO A ALTERAÇÃO SEM PRÉVIO AVISO

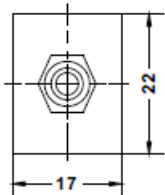
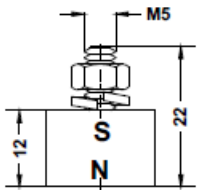
Imãs

TTC1



Imã modelo **TTC1**

Sensor	Sn
TG4R	10
TG4R-S	20
TG4RS-NF	13

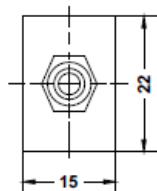
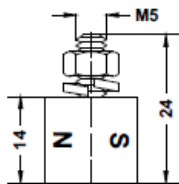


TTSO



Imã modelo **TTSO**

Sensor	Sn
TG4R	10
TG4R-S	18
TG4RS-NF	12



TTR8



Imã modelo **TTR8**

Sensor	Sn
TG4R	4
TG4R-S	11
TG4RS-NF	5



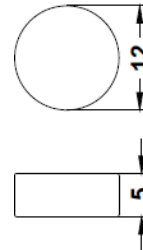
Sn: Distância sensora

TTR12



Imã modelo **TTR12**

Sensor	Sn
TG4R	10
TG4R-S	20
TG4RS-NF	13

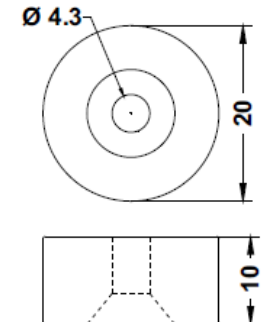


TTR20



Imã modelo **TTR20**

Sensor	Sn
TG3R	5
TG3R-S	15
TG3RS-NF	8



Dimensões em mm